



## High Efficiency 60m<sup>3</sup>/H Stationary Concrete Batching Plant Concrete Mixing Plant

Our Product Introduction

for more products please visit us on [sunnyconcretebatchingplant.com](http://sunnyconcretebatchingplant.com)

### Basic Information

- Place of Origin: Hunan
- Brand Name: SUNNY
- Model Number: HSZ60
- Minimum Order Quantity: 1 set
- Price: USD 110000-150000/ SET
- Packaging Details: container
- Delivery Time: 25-30 days
- Payment Terms: L/C, T/T, D/P, Western Union, MoneyGram
- Supply Ability: 20 Set/Sets per Month

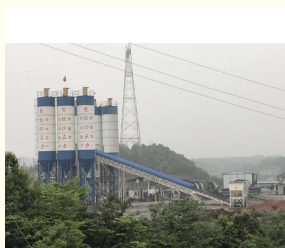


### Product Specification

- Maaterial: Cement, Crushed Stone, Sands And So On
- Application: Building Works,Construction Projects,bridges,docks,airport
- Control System: Automatic PLC Control,totally Automatic
- Productivity: ≤60m<sup>3</sup>/h
- Mixer: JS1000 Twin-shaft Concrete Mixer
- Warranty: 12 Months
- Condition: New
- After-sales Service Provided: Engineers Available To Service Machinery Overseas,Online Support,Video Technical Support,Field Installation,commissioning And Training
- Highlight: **60m<sup>3</sup>/h Concrete Mixing Plant, Stationary Concrete Batching Plant, plant concrete**



### More Images



## Product Description

### High Efficiency 60m<sup>3</sup>/h Stationary Concrete Batching Plant Concrete Mixing Plant High Efficiency 60m<sup>3</sup>/h Stationary Concrete Batching Plant Concrete Mixing Plant

At the core of the HZS60 batching plant is a sophisticated mixing system that incorporates a twin-shaft concrete mixer. This twin-shaft mixer operates at a high speed, ensuring thorough and efficient mixing of aggregates, cement, water, and additives. The result is a homogeneous concrete mixture with excellent consistency and quality.

The HZS60 batching plant is equipped with advanced weighing systems that ensure precise measurement and dosing of materials. With precision sensors and load cells, these systems accurately weigh aggregates, cement, water, and additives. This precise control of material ratios guarantees consistent and high-quality concrete mixes.

Name of parameter	HZS60	HZS90	HZS120	HZS180	HZS240
Theoretical productivity	60 M <sup>3</sup> /h	90 M <sup>3</sup> /h	120 M <sup>3</sup> /h	180 M <sup>3</sup> /h	240m <sup>3</sup> /h
Model of mixer	JS1000	JS1500	JS2000	JS3000	JS4000
Mixing motor power	2x18.5Kw	2x30Kw	2x37Kw	2x55Kw	2*75Kw
Cycle period	60s	60s	60s	60s	60s
Volume of mixer	1000L	1500L	2000L	3000L	4000L
Unloading height	4.0m	4.0m	4.0m	4.0m	4.0m
Measuring range and precision of aggregate	(600-2000)≤±2%	(700-2400)≤±2%	(1000-3600)≤±2%	(1600-4800)≤±2%	(1600-4800)≤±2%
Measuring range and precision of cement	(300-1200)≤±1%	(300-1200)≤±1%	600-1800)≤±1%	(800-2400)≤±1%	(800-2400)≤±1%
Measuring range and precision of coal ash	(200-600)≤±1%	(200-600)≤±1%	(300-900)≤±1%	(400-1200)≤±1%	(400-1200)≤±2%
Measuring range and precision of water	200-600)≤±1%	(200-600)≤±1%	(200-700)≤±1%	(360-1200)≤±1%	(360-1200)≤±1%
Measuring range and precision of admixture	20-60)≤±1%	(20-60)≤±1%	(30-100)≤±1%	(36-120)≤±1%	(36-120)≤±1%



#### Features of concrete batching plant:

- 1.It adopts combined structure and unitized module, which is short, quick and very convenient for installation and demolition .
- 2.Increase the unloading angle of the aggregate bin to solve the problem of unloading difficulties caused by rain
- 3.It is convenient and quick to use the cylinder discharge or electric push rod to discharge.
- 4.The overall steel structure of the mixing station is made of high-quality steel, which has high overall structural strength and strong stability.
- 5.The mixing machine adopts the twin-shaft forced mixing main machine, which has strong mixing performance, uniform mixing and high productivity.
- 6.Excellent pneumatic components, electrical components, etc.; to ensure the reliability of the equipment, accurate metering performance.
- 7.Each maintenance and repair site is provided with a walking platform or a check ladder, and has sufficient operation space. Easy maintenance and repair
- 8.Environmental protection and energy saving, using pulse dust removal, recycling waste-water for reuse



**Hunan Sunny Intelligent Machinery Co.,LTD.**



+86 19118921276



amy@hnsunny.com.cn



sunnyconcretebatchingplant.com

Construction Machinery Supporting Industrial Park, High-tech Zone, Ningxiang City, Hunan Province