



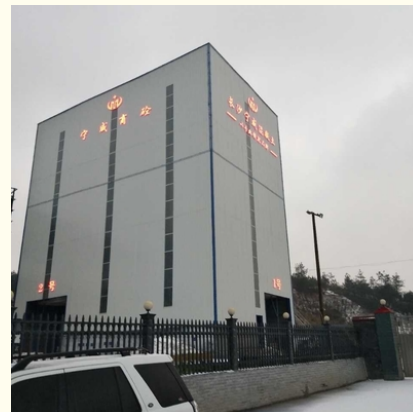
concrete mixing plant Three-year Warranty 60 cubic meter/hour js1000

Our Product Introduction

for more products please visit us on sunnyconcretebatchingplant.com

Basic Information

- Place of Origin: Hunan
- Brand Name: SUNNY
- Model Number: HSZ60
- Minimum Order Quantity: 1 set
- Price: USD 110000-150000/ SET
- Packaging Details: container
- Delivery Time: 25-30 days
- Payment Terms: L/C, T/T, D/P, Western Union, MoneyGram
- Supply Ability: 20 Set/Sets per Month



Product Specification

- Maaterial: Cement, Crushed Stone, Sands And So On
- Application: Building Works,Construction Projects,bridges,docks,airport
- Control System: Automatic PLC Control,totally Automatic
- Productivity: ≤60m3/h
- Mixer: JS1000 Twin-shaft Concrete Mixer
- Warranty: 12 Months
- Condition: New
- After-sales Service Provided: Engineers Available To Service Machinery Overseas,Online Support,Video Technical Support,Field Installation,commissioning And Training
- Highlight: **Three-year Warranty Concrete Mixing Plant, js1000 Concrete Mixing Plant**



Product Description

High Efficiency 60m³/h Stationary Concrete Batching Plant Concrete Mixing Plant

Name of parameter	HZS60	HZS90	HZS120	HZS180	HZS240
Theoretical productivity	60 M ³ /h	90 M ³ /h	120 M ³ /h	180 M ³ /h	240m ³ /h
Model of mixer	JS1000	JS1500	JS2000	JS3000	JS4000
Mixing motor power	2x18.5Kw	2x30Kw	2x37Kw	2x55Kw	2*75Kw
Cycle period	60s	60s	60s	60s	60s
Volume of mixer	1000L	1500L	2000L	3000L	4000L
Unloading height	4.0m	4.0m	4.0m	4.0m	4.0m
Measuring range and precision of aggregate	(600-2000)≤±2%	(700-2400)≤±2%	(1000-3600)≤±2%	(1600-4800)≤±2%	(1600-4800)≤±2%
Measuring range and precision of cement	(300-1200)≤±1%	(300-1200)≤±1%	600-1800)≤±1%	(800-2400)≤±1%	(800-2400)≤±1%
Measuring range and precision of coal ash	(200-600)≤±1%	(200-600)≤±1%	(300-900)≤±1%	(400-1200)≤±1%	(400-1200)≤±2%
Measuring range and precision of water	200-600)≤±1%	(200-600)≤±1%	(200-700)≤±1%	(360-1200)≤±1%	(360-1200)≤±1%
Measuring range and precision of admixture	20-60)≤±1%	(20-60)≤±1%	(30-100)≤±1%	(36-120)≤±1%	(36-120)≤±1%



Features of concrete batching plant:

- 1.It adopts combined structure and unitized module, which is short, quick and very convenient for installation and demolition .
- 2.Increase the unloading angle of the aggregate bin to solve the problem of unloading difficulties caused by rain
- 3.It is convenient and quick to use the cylinder discharge or electric push rod to discharge.
- 4.The overall steel structure of the mixing station is made of high-quality steel, which has high overall structural strength and strong stability.
- 5.The mixing machine adopts the twin-shaft forced mixing main machine, which has strong mixing performance, uniform mixing and high productivity.
- 6.Excellent pneumatic components, electrical components, etc.; to ensure the reliability of the equipment, accurate metering performance.
- 7.Each maintenance and repair site is provided with a walking platform or a check ladder, and has sufficient operation space. Easy maintenance and repair
- 8.Environmental protection and energy saving, using pulse dust removal, recycling waste-water for reuse

Q: What kind of products do you have?

1. Stationary concrete batching plant arranges from HZS25 to HZS180.
2. Mobile concrete batching plant.
3. Concrete mixer machine.
4. Portable drum concrete mixer with diesel engine.
5. Spare parts including screw conveyor and bolted cement silo.

Q: Are you trading company or manufacturer?

A: We are manufacturer. We can design and manufacturer products with our patent. Welcome to visit us to check it!

Q: What are the terms of payment in your formal trade?

A:Normally we can work on T/T term ,L/C term and Alibaba Trade Assurance Order Online .

T/T: 30%T/T prepayment , 70% paid by T/T before delivery.

L/C: 100% irrevocable L/C at sight.



Hunan Sunny Intelligent Machinery Co.,LTD.



+86 19118921276



amy@hnsunny.com.cn



sunnyconcretebatchingplant.com

Construction Machinery Supporting Industrial Park, High-tech Zone, Ningxiang City, Hunan Province