



Mixing Mobile Concrete Batch Plant Manufacturers Compact

Our Product Introduction

for more products please visit us on sunnyconcretebatchingplant.com

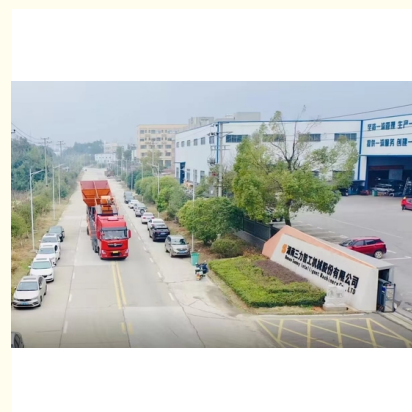
Basic Information

- Place of Origin: Hunan
- Brand Name: Sunny
- Model Number: YHZ60
- Minimum Order Quantity: 1 set
- Price: USD40000-60000 PER SET
- Packaging Details: FULL CONTAINER
- Delivery Time: 20-35DAYS
- Payment Terms: L/C, D/A, D/P, T/T, Western Union, MoneyGram
- Supply Ability: 50 SET PER MONTH



Product Specification

- Warranty: 12 Months
- Condition: New
- After-sales Service Provided: Engineers Available To Service Machinery Overseas,Online Support,Field Installation,commissioning And Training,Field Maintenance And Repair Service
- Power Type: Electric
- Color: Customer Required
- Capacity: 90 M3/h
- Type: Twin Horizontal Shaft
- Productivity: 60m3/hr
- Application: Building Works,Construction Projects
- Control System: Automatic PLC Control,Siemens
- Mixer: Twin Shaft Mixer JS1000
- Highlight: **mobile mixing plant,**
mobile concrete batch plants,
mobile concrete batch plant manufacturers



Product Description

MOBILE CONCRETE BATCHING PLANT PRICE automatic complete compact YHZ60

Mobile concrete batching plant

Mobile concrete batching plant is specially designed for projects that we need to change job sites from time to time. It is very easy to disassemble and move to another job site, the installation is also quite easy. For our new type of mobile batching plant, all parts are mobile and no reinforced concrete foundation is needed, including the cement silo. You just need a car to tow it to the new job site, place the machine in the right position and connect the cables, then you can use it.

Like stationary batching plant, the mobile batching plant is also equipped with water, cement and additive scales which can ensure the quality of the concrete.

As a manufacturer of concrete batching plant with over 20-year experience, we have YHZ series of mobile concrete batching plant. The capacity is from 25m³/h to 90m³/h. Welcome to contact us for details and quotations.



Model	HZS25	HZS35	HZS50	HZS60	HZS75	HZS90	HZS120	HZS150	HZS180
Discharging Capacity (L)	500	750	1000	1000	1500	1500	2000	2500	3000
Charging Capacity(L)	800	1200	1600	1600	2400	2400	3200	4000	4800
Maximum Productivity(m ³ /h)	25	35	50	60	75	90	120	150	180
Charging Model	Skip Hopper	Skip Hopper	Skip Hopper	belt conveyor	Skip Hopper	belt conveyor	belt conveyor	belt conveyor	belt conveyor
Standard Discharging Height(m)	1.5~3.8	2~4.2	4.2	4.2	4.2	4.2	3.8~4.5	4.5	4.5
Number of Species of Aggregate	2~3	2~3	3~4	3~4	3~4	4	4	4	4
Maximum Aggregate Size(mm)	≤60mm	≤80mm	≤80mm	≤80mm	≤80mm	≤80mm	≤120mm	≤150mm	≤180mm
Cement/Powder Silo Capacity(set)	1×100T	2×100T	3×100T	3×100T	3×100T	3×100T	4×100T or 200T	4×200T	4×200T
Mixing Cycle Time(s)	72	60	60	60	60	60	60	30	30
Total Installed Capacity(kw)	60	78.5	111	145	110	198.06	210	230	288



Mobility Features: One of the key features of a mobile batching plant is its mobility. It is designed to be easily transported from one location to another. The plant is mounted on a trailer or a chassis with wheels, allowing it to be towed by a vehicle. Some models may also include folding mechanisms or telescopic legs to facilitate quick setup and dismantling.

Optional Features: Mobile batching plants may offer additional features to enhance their functionality and convenience. These can include built-in cement silos for cement storage, integrated control cabins for operator comfort, and auxiliary equipment such as screw conveyors or cement augers for efficient material handling.

The mobile batching plant offers the advantages of on-site concrete production, eliminating the need for transportation of ready-mixed concrete. It allows for immediate and continuous availability of fresh concrete, enabling efficient construction operations, reduced dependency on external suppliers, and cost savings.

It's important to note that specific features, capacities, and configurations of mobile batching plants may vary depending on the manufacturer and model. Therefore, it is recommended to refer to product catalogs or consult with manufacturers for detailed information on a specific mobile batching plant.



Hunan Sunny Intelligent Machinery Co.,LTD.

+86 19118921276

amy@hnsunny.com.cn

sunnyconcretebatchingplant.com

Construction Machinery Supporting Industrial Park, High-tech Zone, Ningxiang City, Hunan Province