



Hzs90 Stationary Concrete Batching Plant With Automatic Control System And 50-200 Ton Cement Silo

Our Product Introduction

for more products please visit us on sunnyconcretebatchingplant.com

Basic Information

- Place of Origin: Hunan
- Brand Name: SUNNY
- Model Number: HSZ90
- Minimum Order Quantity: 1 set
- Price: USD 110000-150000/ SET
- Packaging Details: container
- Delivery Time: 25-30 days
- Payment Terms: L/C, T/T, D/P, Western Union, MoneyGram
- Supply Ability: 20 Set/Sets per Month

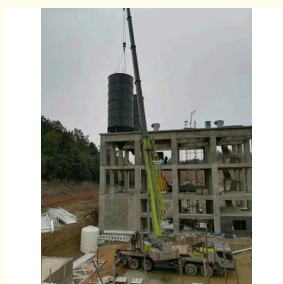


Product Specification

- Maaterial: Cement, Crushed Stone, Sands And So On
- Application: Building Works,Construction Projects,bridges,docks,airport
- Control System: Automatic PLC Control,totally Automatic
- Productivity: $\leq 90\text{m}^3/\text{h}$
- Mixer: JS1500 Twin-shaft Concrete Mixer
- Warranty: 12 Months
- Condition: New
- After-sales Service Provided: Engineers Available To Service Machinery Overseas,Online Support,Video Technical Support,Field Installation,commissioning And Training
- Highlight: **Stationary Concrete Batching Plant, Automatic Control System Concrete Batching Plant**
, stationary concrete batching plant for sale



More Images



Product Description

HZS90 Ready mix concrete plant small concrete batching plant cement skip type concrete mixing plant
HZS90 Manufacturer Concrete Batch Plant concrete batching plant

The HZS90 batching plant is a robust, stationary concrete mixing facility designed for high-capacity production. It typically features a 90 cubic meter per hour output, making it suitable for large-scale construction projects. Key components include a twin-shaft mixer for uniform mixing, aggregate bins, a weighing system for precise material measurement, and a control system for easy operation. Its efficient design ensures durability and reliability, while the modular structure allows for quick installation and flexibility in configuration.

At the core of the HZS90 batching plant is a sophisticated mixing system that incorporates a twin-shaft concrete mixer. This twin-shaft mixer operates at a high speed, ensuring thorough and efficient mixing of aggregates, cement, water, and additives. The result is a homogeneous concrete mixture with excellent consistency and quality. The HZS90 batching plant is equipped with advanced weighing systems that ensure precise measurement and dosing of materials. With precision sensors and load cells, these systems accurately weigh aggregates, cement, water, and additives. This precise control of material ratios guarantees consistent and high-quality concrete mixes.

Name of parameter	HZS60	HZS90	HZS120	HZS180	HZS240
Theoretical productivity	60 M3/h	90 M3/h	120 M3/h	180 M3/h	240m³/h
Model of mixer	JS1000	JS1500	JS2000	JS3000	JS4000
Mixing motor power	2x18.5Kw	2x30Kw	2x37Kw	2x55Kw	2*75Kw
Cycle period	60s	60s	60s	60s	60s
Volume of mixer	1000L	1500L	2000L	3000L	4000L
Unloading height	4.0m	4.0m	4.0m	4.0m	4.0m
Measuring range and precision of aggregate	(600-2000)±2%	(700-2400)±2%	(1000-3600)±2%	(1600-4800)±2%	(1600-4800)±2%
Measuring range and precision of cement	(300-1200)±1%	(300-1200)±1%	600-1800)±1%	(800-2400)±1%	(800-2400)±1%
Measuring range and precision of coal ash	(200-600)±1%	(200-600)±1%	(300-900)±1%	(400-1200)±1%	(400-1200)±2%
Measuring range and precision of water	200-600)±1%	(200-600)±1%	(200-700)±1%	(360-1200)±1%	(360-1200)±1%
Measuring range and precision of admixture	20-60)±1%	(20-60)±1%	(30-100)±1%	(36-120)±1%	(36-120)±1%



Q: What's your after-sale service?

A: 12 months warranty for main parts since departure. On-site installation, debugging, workers training. Make sure that your workers operate properly and know daily maintenance well. Q: What's your delivery time?

A: The goods will be delivered in 30-45 days after the 30% of the total amount is paid as deposit, and maybe a little longer if busy in the factory.

B: Generally it is 7-10 days if the goods are in stock. or it is 15-20 days if the goods are not in stock, it is according to quantity.

Q. How long do you warranty your concrete batching plant?

A: We shall guarantee that the commodity for 1 year, excluding the wearing parts, and we will offer our customers the wearing parts all the time with favorable price.

Q: What should I do if I experience a problem on our equipment?

A: You could email us the photos to show what happens or call us, and our service line is available 24/7, and then we will feedback you immediately. Also on-site technician service available as request.

Q. How can we install the plant?

A: Our engineer will make installation drawing before we send the machine, and our engineer will go overseas to guide and train the installation after everything is already set in customer's construction site.

Q: Do you have CE certificate for your concrete batching plant?

A: Yes, we have. It is our patent products, certificated by CE.



Hunan Sunny Intelligent Machinery Co., LTD.



+86 19118921276



amy@hnsunny.com.cn



sunnyconcretebatchingplant.com

Construction Machinery Supporting Industrial Park, High-tech Zone, Ningxiang City, Hunan Province